

# PUMP PERFORMANCE CURVES

TYPE: SUBMERSIBLE SLURRY PUMP

MODEL: 50PDO.55

FREQUENCY: 50Hz

## STANDARD SPECIFICATIONS

DISCHARGE BORE

50 mm

HEAD

Max: 13 m

Rated: 8 m

CAPACITY

Max: 0.22 m<sup>3</sup>/min

Rated: 0.13 m<sup>3</sup>/min

MOTOR OUTPUT

0.55 kW

PHASE x VOLTAGE

3 Øx 380/400V

CURRENT

1.7 A

POLES/REVOLUTION

2 P/ S.S.2850 min<sup>-1</sup>

STARTING METHOD

Direct-on-line start

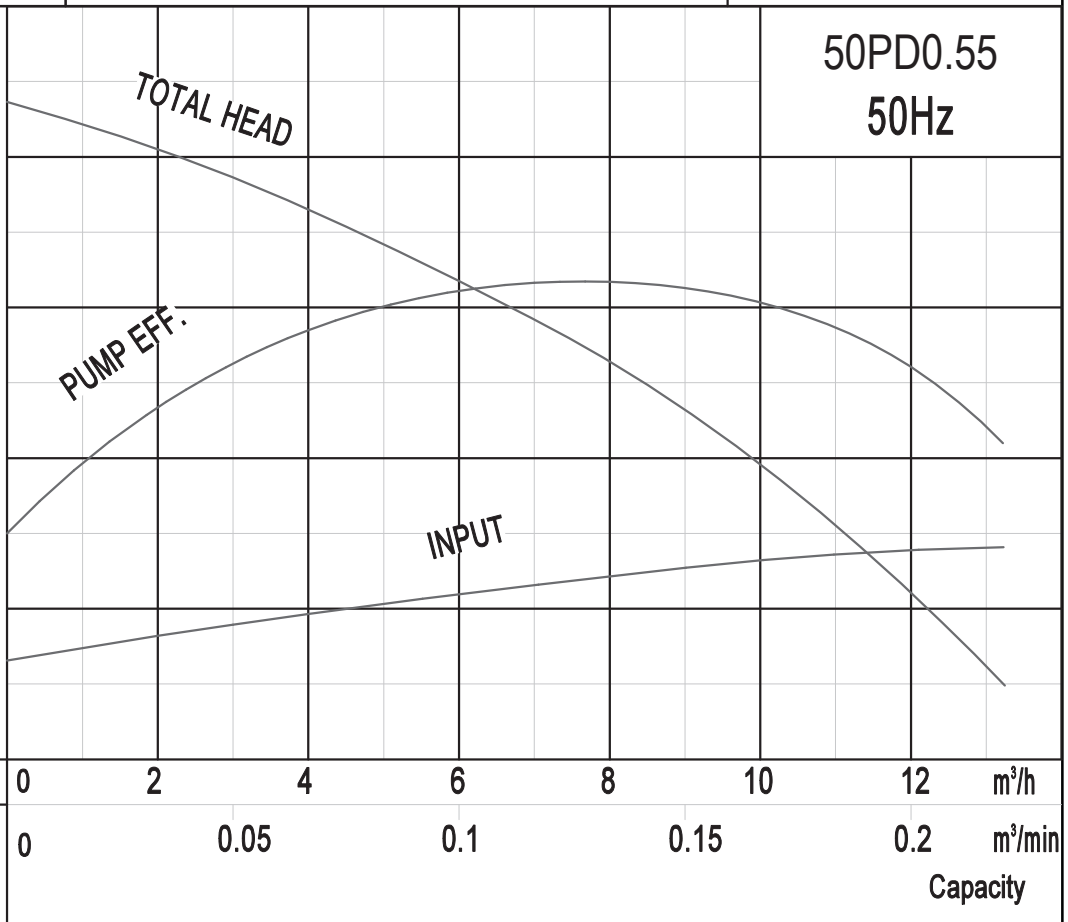
INSULATION CLASS

F

60  
50  
40  
30  
20  
10  
0

0.7  
0.5  
0.3

12  
9  
6  
3

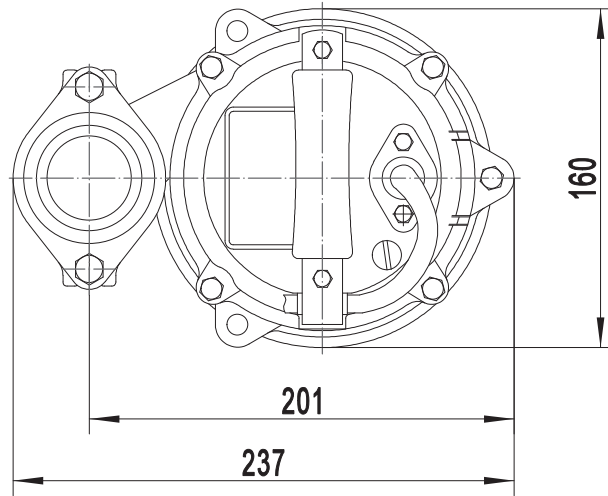


%	kW	m	0	2	4	6	8	10	12	m <sup>3</sup> /h
PUMP EFF.	INPUT (P1)	TOTAL HEAD	0	0.05	0.1	0.15	0.2	Capacity		

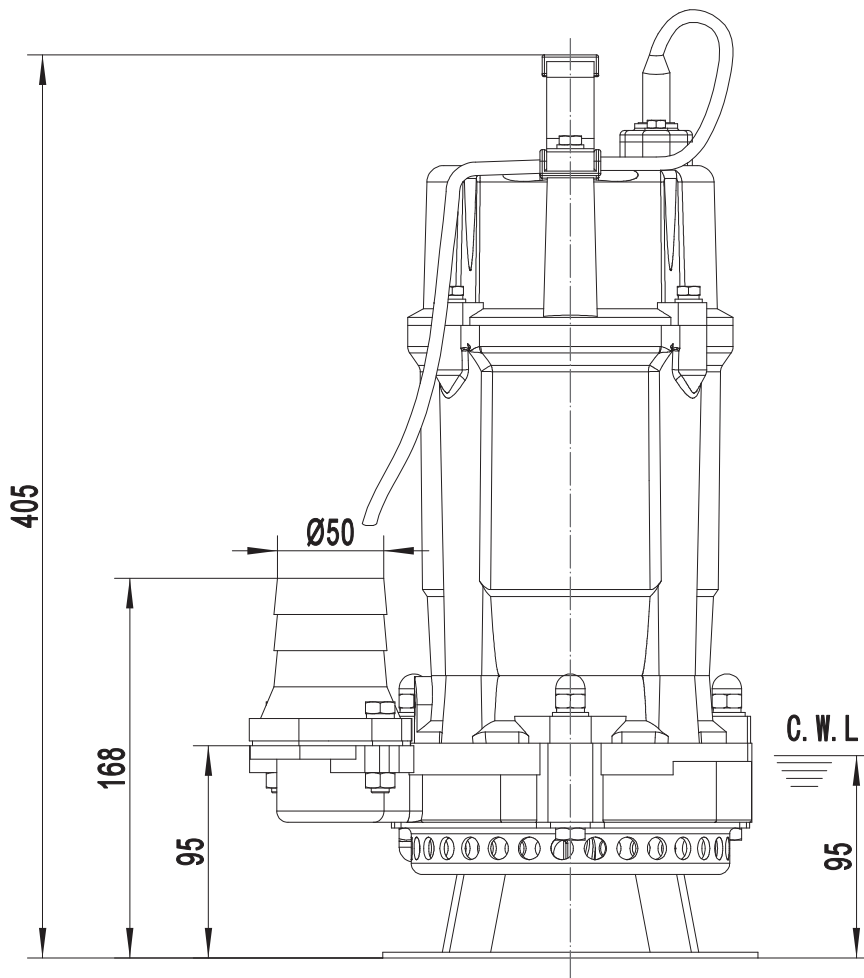
SOLIDPUMP EUROPE SIA

DIMENSION DRAWING  
TYPE: **SUBMERSIBLE SLURRY PUMP**

MODEL: 50PD0.55



Model	N.W(kg)
50PD0.55	14

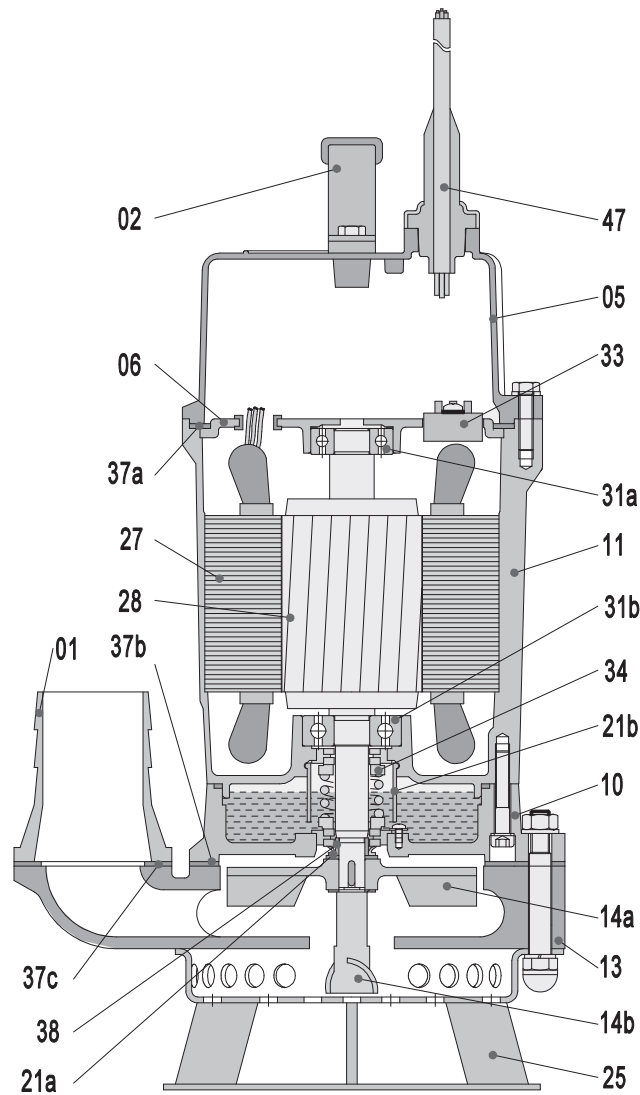


C.W.L:Continuous Running Water Level.

**SOLIDPUMP EUROPE SIA**

**DIMENSION DRAWING**  
**TYPE: SUBMERSIBLE SLURRY PUMP**

**MODEL: 50PD0.55**



Item No.	Part name	Material	Item No.	Part name	Material
01	Hose coupling	Cast iron	27	Stator	
02	Handle	Rubber&steel	28	Rotor	Shaft:AISI420SS
05	Upper cover	Aluminum die casting	31a	Bearing	Ball bearing
06	Up-Bearing house	Cast iron	31b	Bearing	Ball bearing
10	Seal house	Cast iron	33	Motor protector	
11	Motor body	Aluminum die casting	34	Mechanical seal	Ceramic-Sic/Carbon-Ceramic
13	Pump body	Cast iron	37a	Gasket	NBR
14a	Impeller	High chrome alloy	37b	Gasket	NBR
14b	Agitator	High chrome alloy	37c	Gasket	NBR
21a	Oil riser	NBR	38	Shaft sleeve	AISI420SS
21b	Sand guard	LDPE	47	Cable	H07RN-F
25	Strainer	Steel			

*Specifications can be changed without notice*

**Solidpump Europe SIA**

Uriekstes iela 14a  
 Rīga, LV-1005  
 LATVIA

Tel.: + 371 66968996  
 E-mail: info@solidpump.com  
 www.solidpump.com

Ver. 21.11.2022

**SOLIDPUMP EUROPE SIA**