

# PUMP PERFORMANCE CURVES

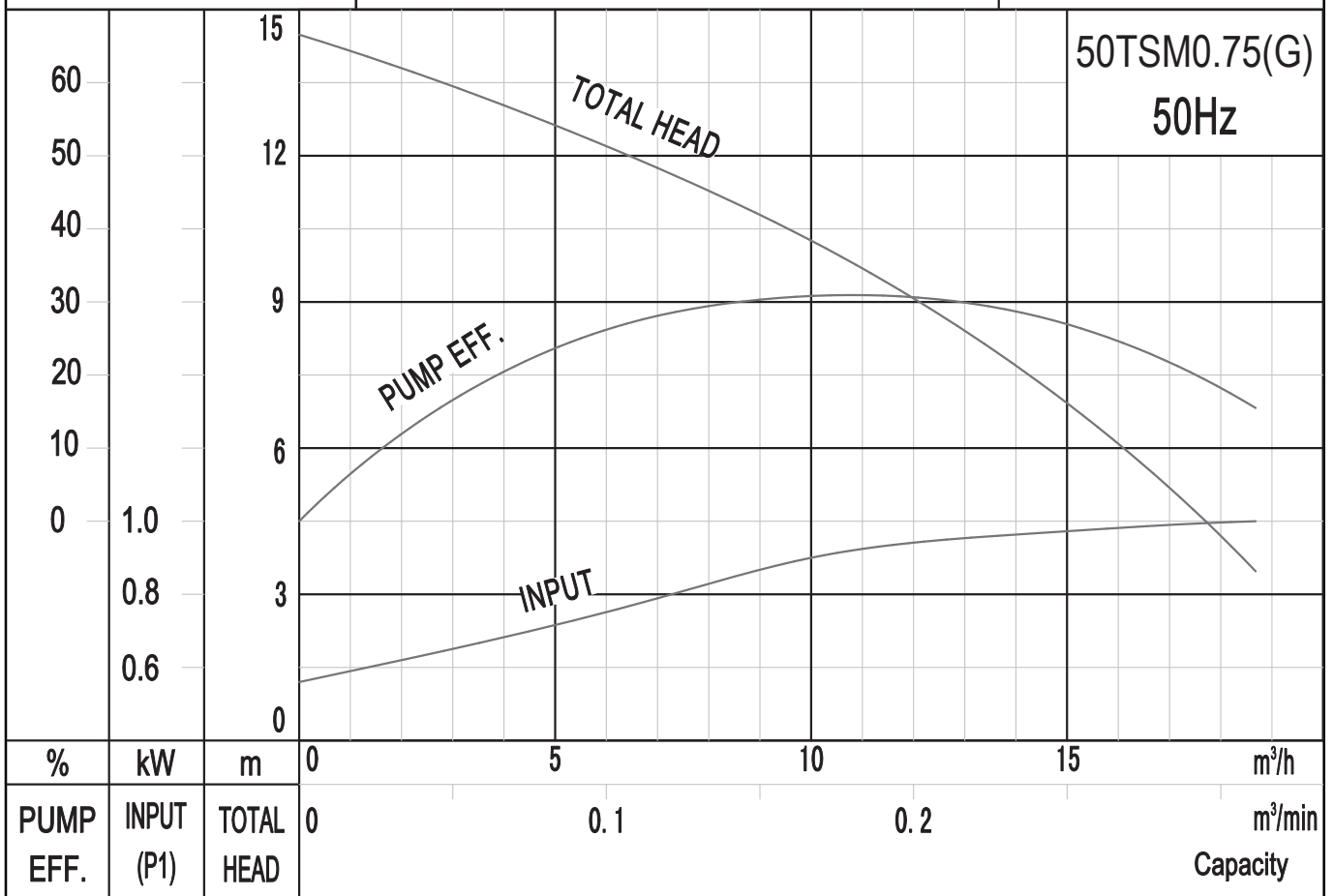
TYPE: SUBMERSIBLE DRAINAGE PUMP

MODEL: 50TSM0.75(G)

FREQUENCY: 50Hz

## STANDARD SPECIFICATIONS

DISCHARGE BORE	50(25) mm
MAX HEAD	14.5 m
MOTOR OUTPUT	0.75 kW
PHASE x VOLTAGE	1 Øx 230 V
CURRENT	5.0 A
POLES/REVOLUTION	2 P/ S.S.2850 min <sup>-1</sup>
STARTING METHOD	Direct-on-line start
INSULATION CLASS	F

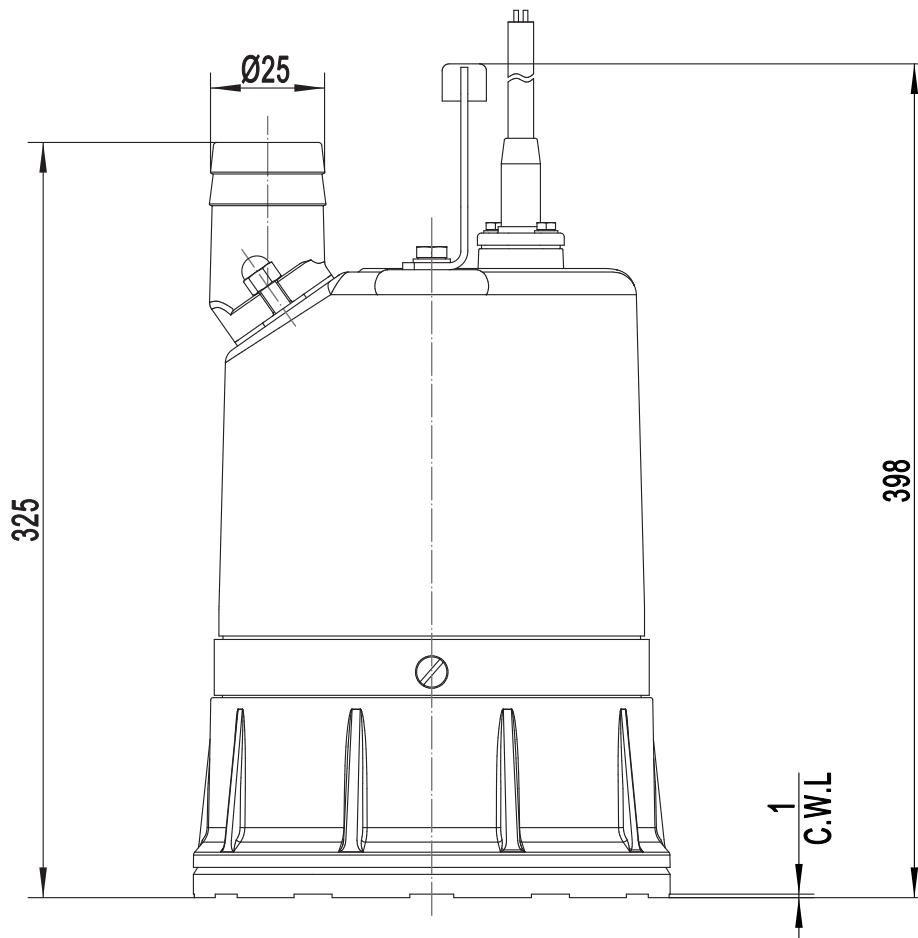
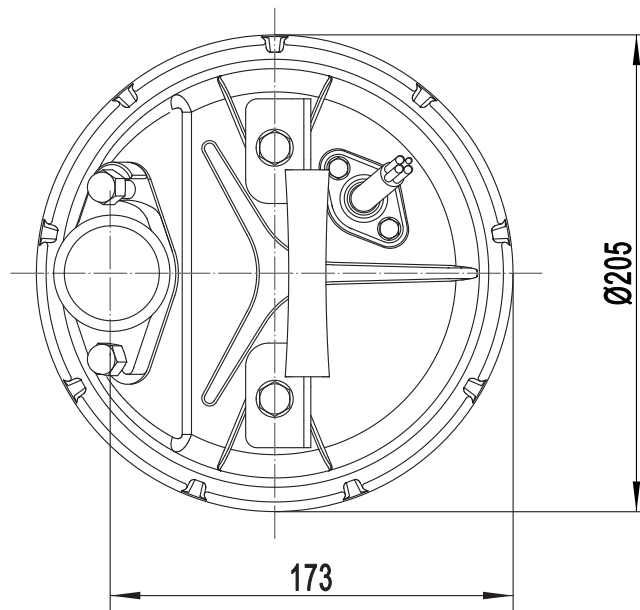


**SOLIDPUMP EUROPE SIA**

DIMENSION DRAWING  
TYPE: **SUBMERSIBLE DRAINAGE PUMP**

MODEL: 50TSM0.75(G)

Model	N.W(kg)
50TSM0.75(G)	14.8



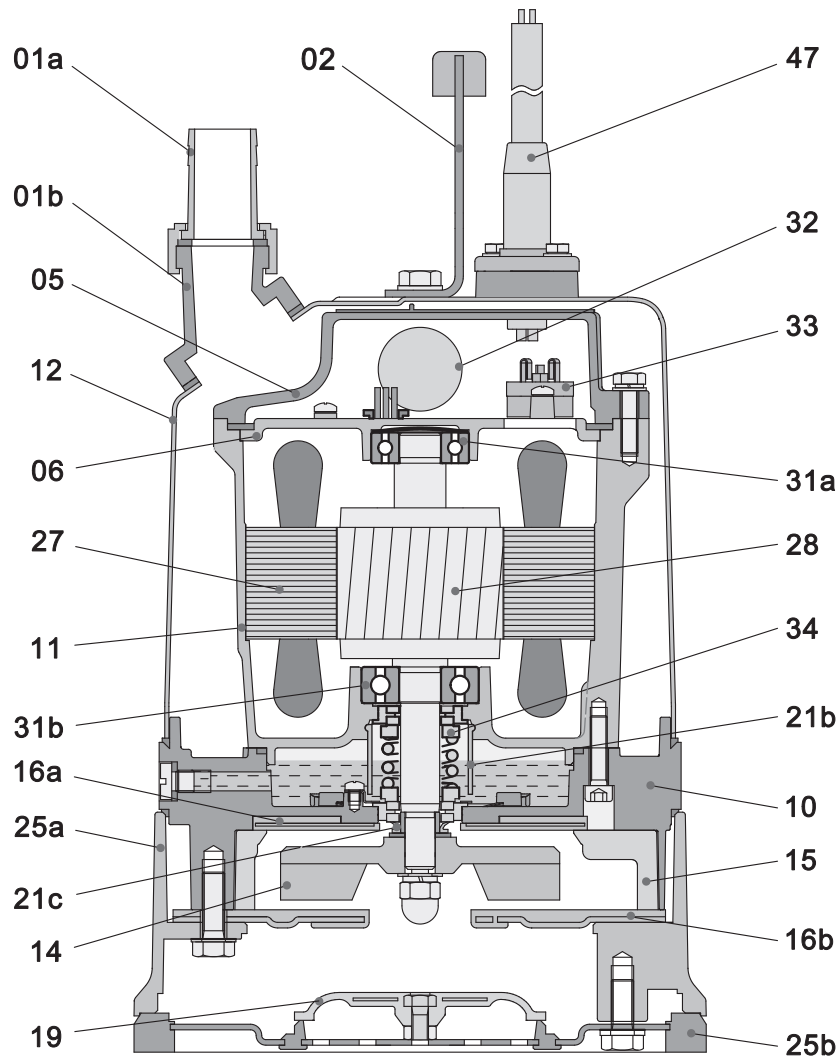
C.W.L:Continuous Running Water Level.

**SOLIDPUMP EUROPE SIA**

# DIMENSION DRAWING

TYPE: **SUBMERSIBLE DRAINAGE PUMP**

MODEL: 50TSM0.75(G)



Item No.	Part name	Material	Item No.	Part name	Material
01a	Hose coupling	Aluminum die casting	21a	Oil riser	NBR
01b	Hose coupling	Aluminum die casting	21b	Sand guard	LDPE
02	Handle	Rubber & steel	25a	Strainer	Aluminum die casting
05	Upper cover	Aluminum die casting	25b	Strainer	NBR & Steel
06	Up-Bearing house	Cast iron	27	Stator	
10	Seal house	Aluminum die casting	28	Rotor	Shaft:AISI420SS
11	Motor body	Aluminum die casting	31a	Bearing	Ball bearing
12	Outer casing	Steel	31b	Bearing	Ball bearing
14	Impeller	Ductile iron	32	Capacitor	
15	Diffuser	NBR	33	Motor protector	
16a	Plate	NBR & Steel	34	Mechanical seal	Ceramic-Sic/Carbon-Ceramic
16b	Intel plate	NBR & Steel	47	Cable	H07RN-F
19	Check value	NBR & Steel			

*Specifications can be changed without notice*

## Solidpump Europe SIA

Uriekstes iela 14a  
Rīga, LV-1005  
LATVIA

Tel.: + 371 66968996  
E-mail: info@solidpump.com  
www.solidpump.com

Ver. 21.11.2022

**SOLIDPUMP EUROPE SIA**